



17 Verlie Street South Wentworthville NSW

6  4  2 

Nestled in a family-friendly area of South Wentworthville, this brand-new, modern, and spacious duplex is an opportunity not to be missed! Located in a convenient and peaceful setting, this exceptional residence offers high-quality family living in the heart of South Wentworthville. Impeccably presented and immediately inviting, the spacious interiors feature multiple living and dining areas that seamlessly connect to a covered alfresco entertainment space.

With its generous and functional layout, this outstanding home is ideal for first-time buyers, those seeking easy living, or savvy investors looking for a property with excellent rental potential. This home is sure to impress both families and investors alike.

Features Include:

- The house: 5 bedrooms, 3 bathrooms, 2 parking spaces

Price : Contact Agent for price

View : <https://www.legendproperty.com.au/sale/nsw/parramatta/south-wentworthville/residential/semi-detached/8119446>

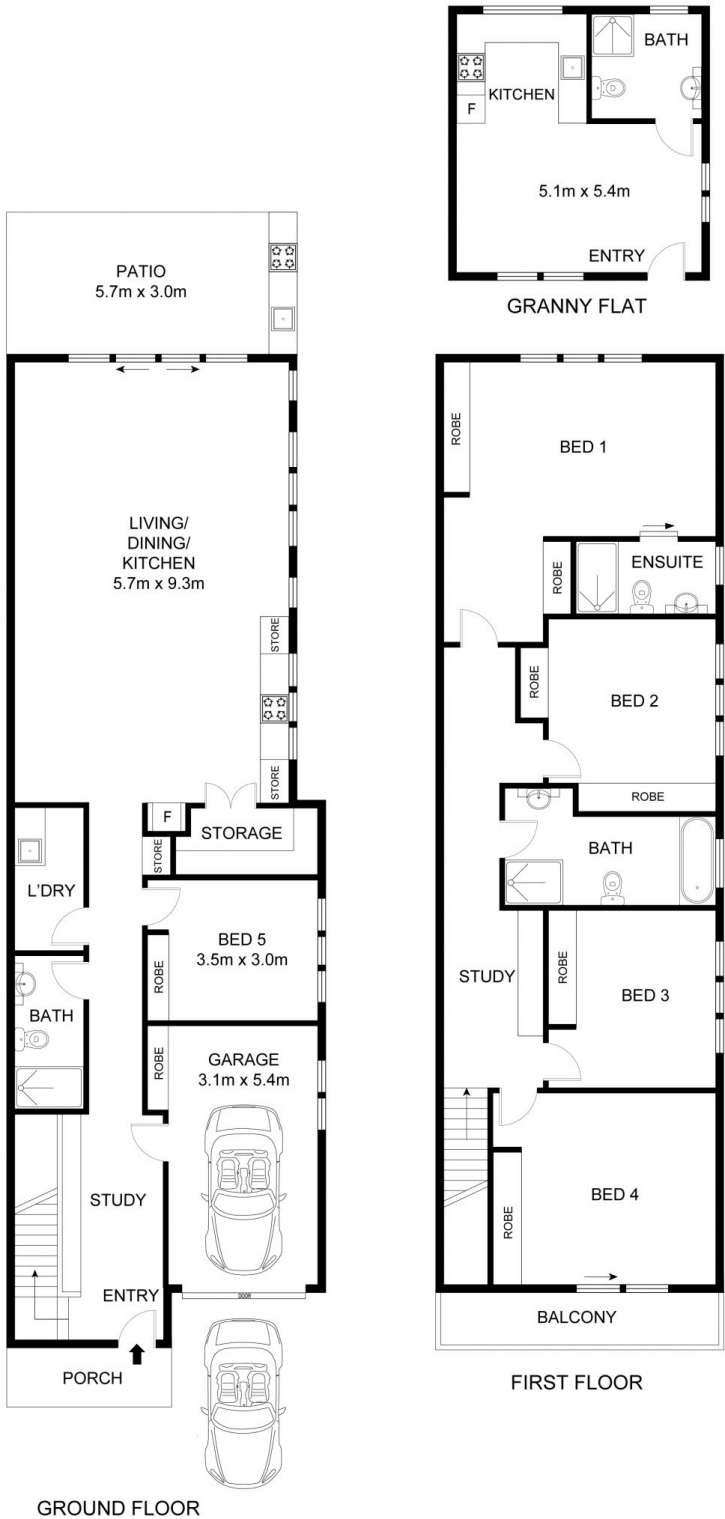


Xudong (Thomas) Zhang
0405 274 048



Jinji (Daisy) Kong
0452 338 660

17 VERLIE STREET, SOUTH WENTWORTHVILLE



GROUND FLOOR

FIRST FLOOR

GRANNY FLAT

 6  4  2

Int: 262 m²
Ext: 27 m²
Land Size: 348 m²

THE ABOVE PLAN IS REPRESENTATION ONLY. ALL DIMENSIONS ARE APPROXIMATE SHOULD BE CHECKED ON SITE.
NO RESPONSIBILITY IS TAKEN FOR ERROR, OMISSION OR MISSTATEMENT.