



Level 10/1001/1 Saunders Close Macquarie Park NSW

1  1  1 

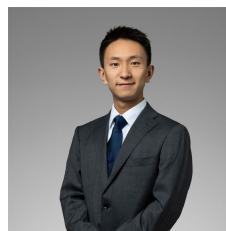
North-facing One bedroom [with Car Space and Storage, Fridge and Washer]

North Facing, Level 10 & 450m to Shopping centre. The premium location will ensure that it enjoys both capital & rental growth. This well-designed apartment offers a highly functional floor plan with vast open-plan living areas. Being at the heart of Macquarie Park, everything from transport, supermarkets, a large selection of restaurants, cafes and other facilities including the university, hospital and technology park are all within walking distance.

Features:

- Sun-drenched combined lounge & dining opened to a north facing balcony.
- Open plan gas kitchen with stainless steel appliances.
- Very generous size bedrooms with built-in robe.

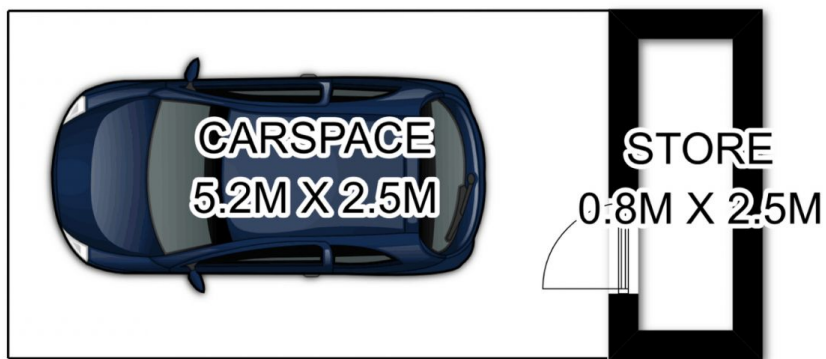
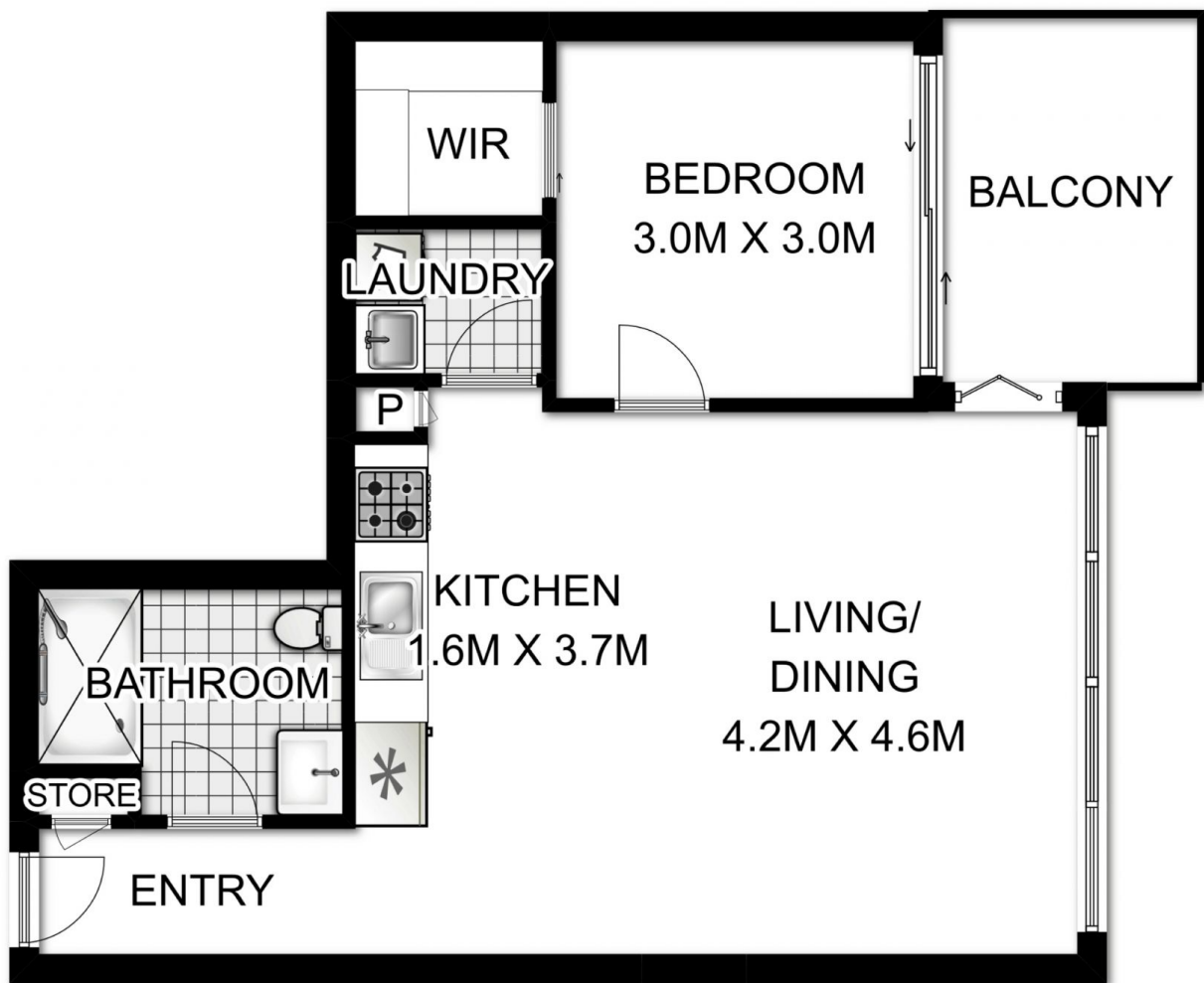
View : <https://www.legendproperty.com.au/lease/nsw/northern-suburbs/macquarie-park/residential/apartment/8108760>



Michael Yu
0422 802 587



Siu (Gary) Cheung
0415087287



DISCLAIMER: 3D Property View accepts no liability for the accuracy of details contained within our floor plans. All plans are drawn and also checked to the best of our ability, however information contained in our floor plans such as area calculations are approximate, and have not been surveyed or drawn to scale. Our floor plans are for representational purposes only and should be used as such. Do not attempt to refer to our floor plans for structural or detailed information.