



201/2A Mark Street Lidcombe NSW

2  2  1 

Combining style with accessibility, this apartment is beautifully appointed with a spacious feel. The supreme location provides easy access to coffee shops, supermarket, retails, Train station, and other local conveniences.

An unique opportunity for first home buyers, professionals, and investors in the highly sought-after Lidcombe town centre.

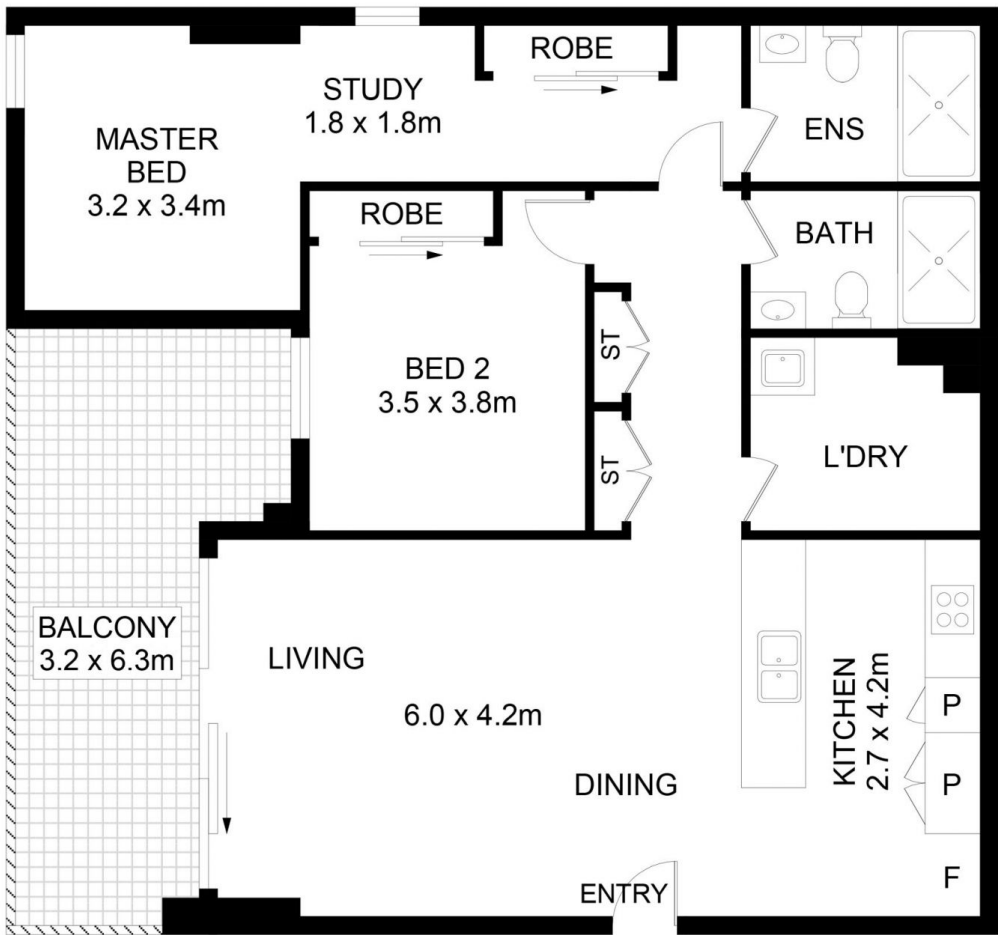
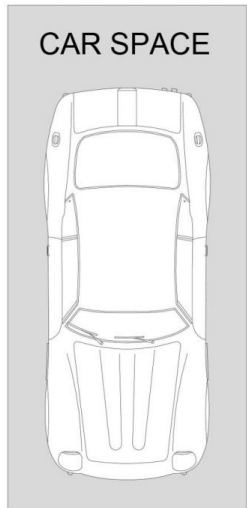
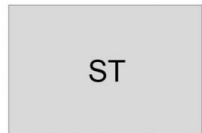
Features:

- North Facing with full day sunlight
- Generous bedrooms with built-in
- Master room comes with a STUDY AREA
- Spacious open plan living and dining leads to entertainer's balcony
- Timber floors in living area and hallway

Price : \$740,000 to \$760,000
Building Size : 117 sqm
Land Size : 117 sqm
View : <https://www.legendproperty.com.au/sale/nsw/parramatta/lidcombe/residential/apartment/8093667>



Siu (Gary) Cheung
0415087287



201/2A Mark Street, Lidcombe

DISCLAIMER: No liability for the accuracy of details contained within our floor plans. All plans are drawn and also checked to the best of our ability, however information contained in our floor plans such as area calculations are approximate, and have not been surveyed or drawn to scale. Our floor plans are for representational purposes only and should be used as such. Do not attempt to refer to our floor plans for structural or detailed information.