



701/27 Gertrude Street Wolli Creek NSW

2  2  1 

This residence boasts premium finishes throughout and offers uninterrupted views of the city, park, and river, all from the comfort of the balcony. The two-bedroom apartment is filled with natural light all day and features a contemporary kitchen with new stainless steel appliances, an open-plan living and dining area with tile flooring, ample internal storage, and ducted air conditioning. Residents can also enjoy the rooftop BBQ facilities, perfect for relaxation and entertaining.

- Nearby green spaces offer a charming escape to nature, featuring facilities for the entire family.
- Quality finishes throughout, with expansive stone benchtops that double as a breakfast bar.
- Ideally located with easy access to Sydney Domestic and International airports.
- Just minutes' walk to Wolli Creek train station, making

Price : Contact Agent for price
View : <https://www.legendproperty.com.au/sale/nsw/st-gertrude/wolli-creek/residential/apartment/8050705>

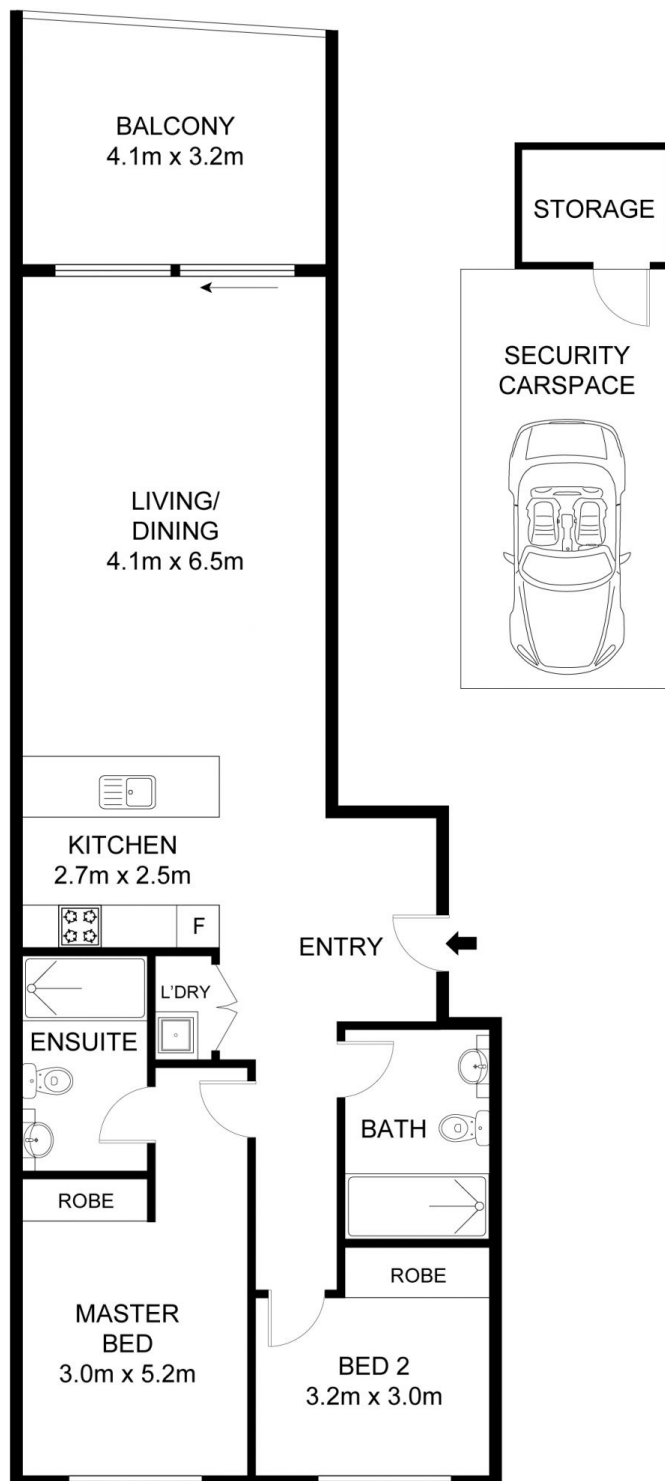


Xin (Chris) Li
0428917888



Xiaoling (Susan) Lin
0430 478 008

701/27 GERTRUDE STEET, WOLLI CREEK



Int: 92 m²
Ext: 14 m²
Total: 106 m²

THE ABOVE PLAN IS REPRESENTATION ONLY. ALL DIMENSIONS ARE APPROXIMATE SHOULD BE CHECKED ON SITE.
NO RESPONSIBILITY IS TAKEN FOR ERROR, OMISSION OR MISSTATEMENT.

Property Fact Sheet

701/27 Gertrude Street, Wollri Creek

Property Information	
Price Guide	Offers Welcome
Building Name / Title	Parkside
Strata Plan Number / Lot	LOT 58 IN STRATA PLAN 94613
Property Size	Total 106sqm, 90sqm excl. secure car space & storage cage
Aspect	North
Rental Estimate	In the vicinity of \$810 - \$840 per week
Level	Level 7 – Building North
Floor fixtures	Timber flooring, carpet and tiles throughout
Parking & storage	Allocated secure car park & storage cage
Pet Friendly	Yes, subject to strata approval
Building Built	2021
Builder / Developer	TFM Chatswood Land PTY LTD
Amenities	Rooftop BBQ facilities
Strata Manager	Strata Republic – 1300 884 104
Strata Levies	\$1,473.35 per quarter
Water Rates	\$211.11 per quarter
Council Rates	\$280.20 per quarter