

401/33 East Street Granville NSW

2  2  1 

Developed by Shokai and Built by Tier 1, multi-award-winning Parkview, this oversized apartment boasts quality finishes, elegant interiors, secure building, and basement parking. Located right next to Granville station, it leads to a relaxing and convenient lifestyle. The owner has taken very good care of the property, ensuring it includes all the extras when purchased.

Key features of this apartment include:

- North-facing with full sun exposure
- Two good-sized bedrooms with built-in robes
- Extended wardrobe in the second bedroom
- Spacious open-plan living/dining area with high ceilings and ducted 2-zone air conditioning
- Ample storage space
- Modern bathrooms with separate laundry facility
- Security building with lift access and basement parking

Price : Under Contract

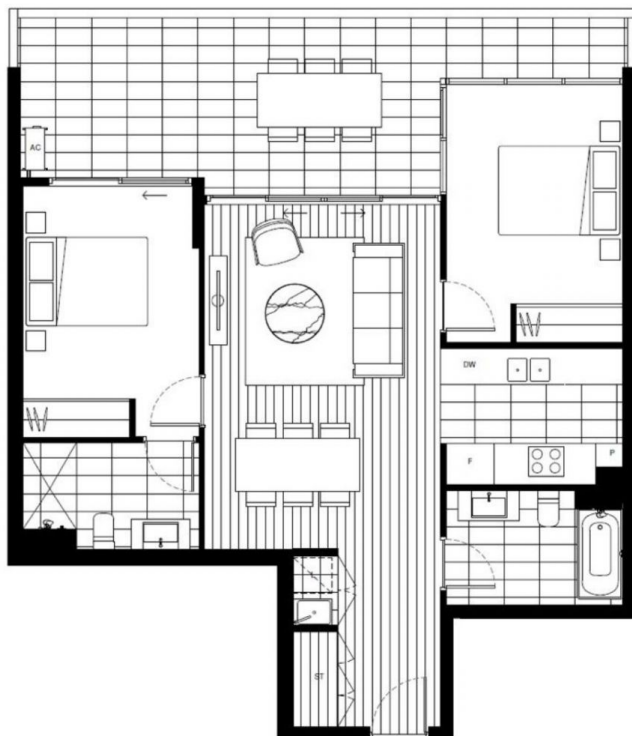
View : <https://www.legendproperty.com.au/sale/nsw/parramatta/granville/residential/apartment/8039452>



Bosheng (paul) Zhu
0451676715



Xingyan (winnie) Qian
0405117888



0 1 2 5



Disclaimer: The particulars are set out as a general outline for the guidance of intending purchasers and do not constitute an offer or contract. All descriptions, dimensions, references to conditions and necessary permutations for use and other details are given in good faith and are believed to be correct, but any intending purchasers should not rely on them as statements or representations of fact, but must satisfy themselves by inspection or otherwise to the correctness of each item, and where necessary seek independent advice. No third party supplier or their agents has any authority to make or give any representations or warranty in relation to this property. Plans are indicative only. Areas are subject to final survey. Completed apartments may vary from the plans shown.

Granville Place

BUILDING
Banksia

TYPE 2FA1

2 BEDROOM
2 BATHROOM

B401

INTERNAL AREA	75M ²
EXTERNAL AREA	23M ²
TOTAL AREA	98M ²



GRANVILLEPLACE.COM.AU
1800 425 949

SHOKU 首开
AUSBAO

OSK
PROPERTY GROUP