



Level 3/302C/1 Glen Street Eastwood NSW

1  1  1 

Eastwood Central presents a blend of stunning residences set atop unrivalled premium retail spaces. Located at the heart of Eastwood, Eastwood Central is only 2-minute away from the Eastwood lifestyle hub, including train station, schools and commercial district. It's quite a convenient and comfortable place for you to live.

View : <https://www.legendproperty.com.au/lease/nsw/northern-suburbs/eastwood/residential/apartment/8033110>

Features:

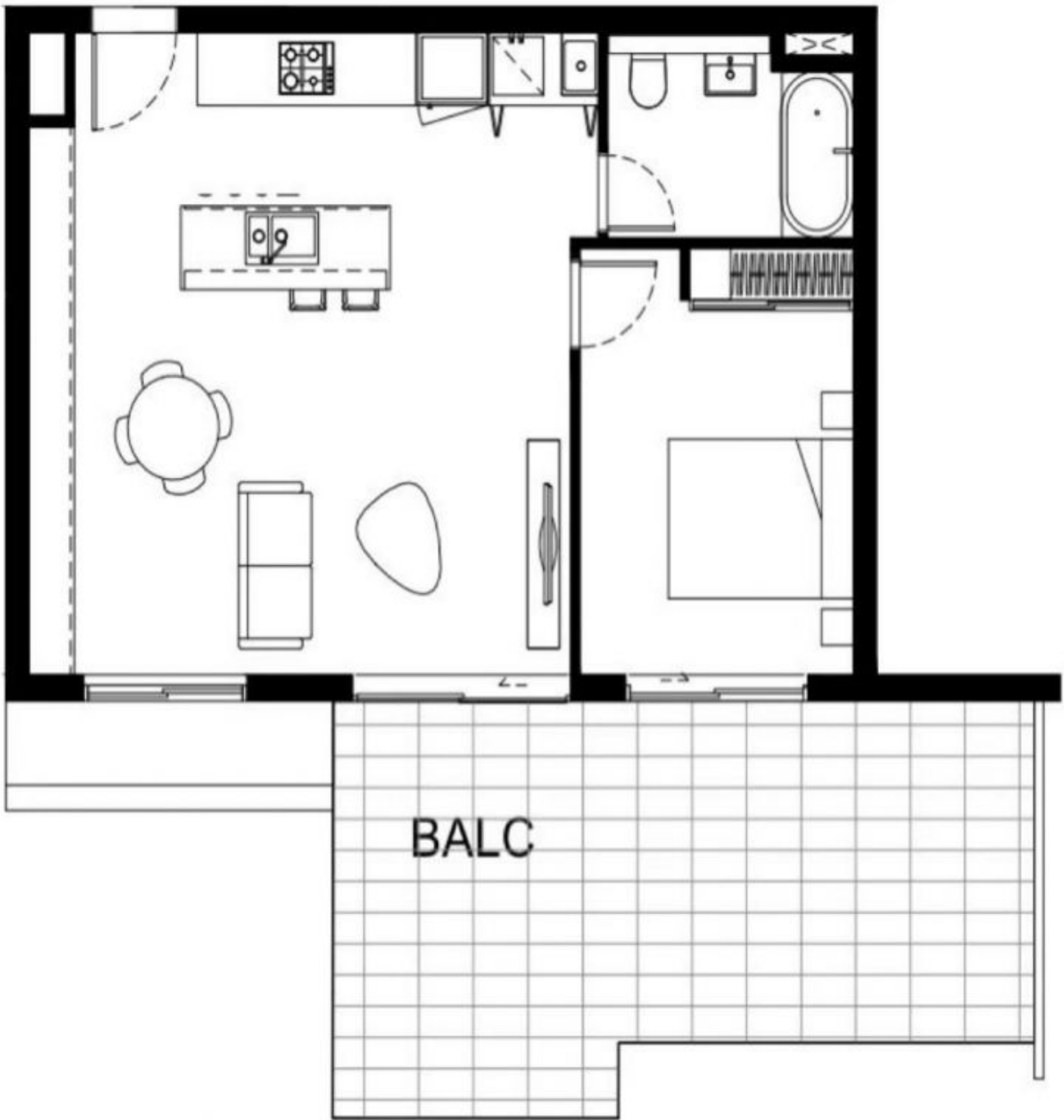
- * Open plan living and dining area
- * Living room with a huge skylight, well-lit. Ceiling height exceeds 2.7m
- * Spacious bedroom with Built-in Wardrobes
- * European premium timber floor
- * Sleek modern kitchen with gas cooktop and quality Miele appliances
- * Ducted out rang-hood in kitchen



Hui (henry) Chen
0410029992



Wenying (Wendy) Yu
0452001920



ROMECITI • YOUR GREENCITY

