

201/6 Shale Street LIDCOMBE NSW

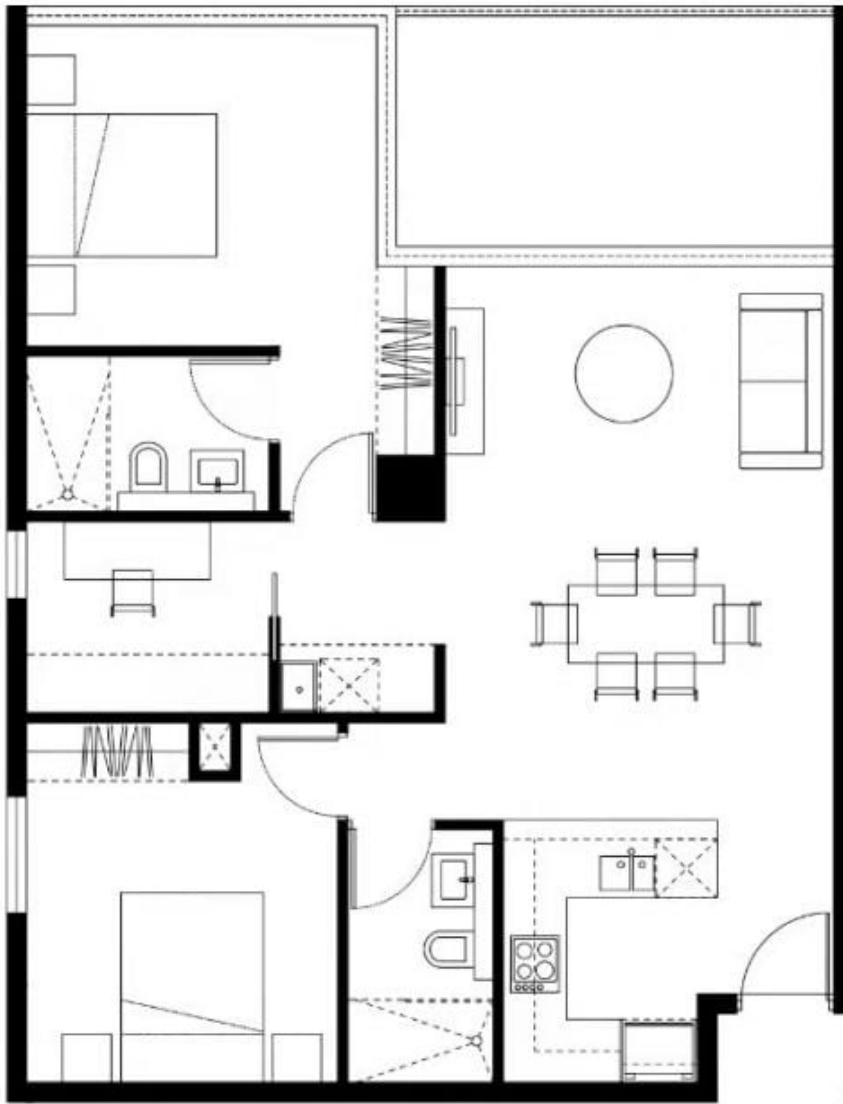
2  2  1 

This is new luxury development in Lidcombe, bordering the best of the lifestyle amenities of Sydney Olympic Park. Architecturally designed for maximum comfort and privacy, this seventh floor apartment is finished with premium fittings and finishes throughout. Its location is just a stroll to Sydney Olympic Park, train station, shops, schools & acres of parklands.

View : <https://www.legendproperty.com.au/lease/nsw/parramatta/lidcombe/residential/apartment/7891260>

Features:

- Two large bedrooms plus with BIR
- Dedicated Study room / home office space
- Innovative floorplan, all living areas connect to the outdoors



LEVEL 2, 9, 15, 16





LEGEND
PROPERTY

PROPERTY MANAGEMENT

LEASING SPECIALIST 🔍

A: Shop 3/105 Church St, Parramatta
M: 0415 087 287
E: gary.cheung@legendproperty.com.au